



15 Coed Isaf Road, Pontypridd, CF37 1EL
Offers Over £240,000

360 WALK THROUGH TOUR AVAILABLE

**** Extended 4 Bedroom Semi Detached House ** Popular Development ** Excellent Potential ****

An excellent size family home located on a popular development in the area of Maesycoed on a local bus route and within minutes of Town Centre, amenities and main roads.

The spacious accommodation comprises entrance hall, wc, lounge, sitting/dining room, living room/home office, kitchen, four bedrooms, bathroom and separate wc.

There are gardens to the front and rear together with driveway and garage, providing ample parking for the family. Offered with no onward chain. Viewing recommended.

Entrance Hall



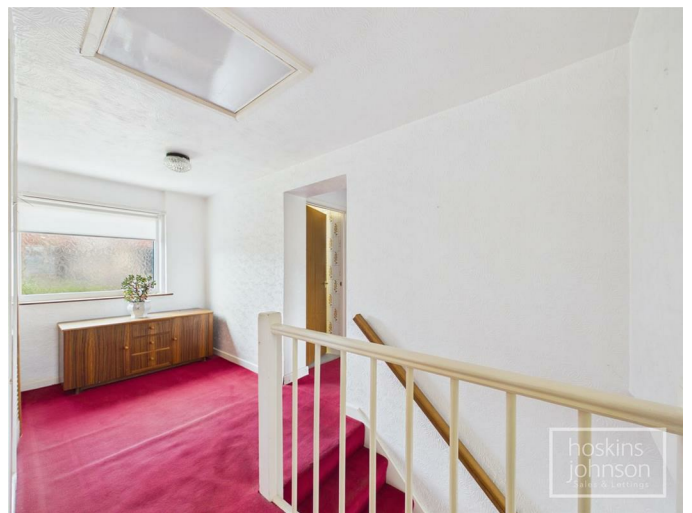
Living Room/Home Office 11'10" x 8'8" (3.61 x 2.66)



Cloaks/WC



Spacious Landing



Lounge 15'8" x 12'4" (4.79 x 3.77)



Bedroom 1 13'6" x 8'8" (4.13 x 2.66)



Sitting/Dining Room 18'11" x 8'5" (5.77 x 2.59)



Kitchen 12'3" x 8'8" (3.74 x 2.66)



Bedroom 2 12'11" x 10'10" (3.94 x 3.32)



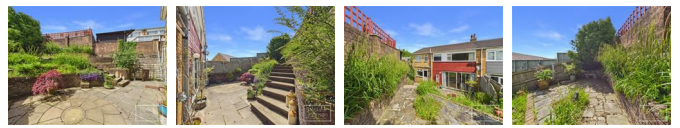
Bedroom 3 11'4" x 11'1" (3.47 x 3.38)



Separate WC



Outside



Bedroom 4 9'10" x 7'10" (3.01 x 2.41)



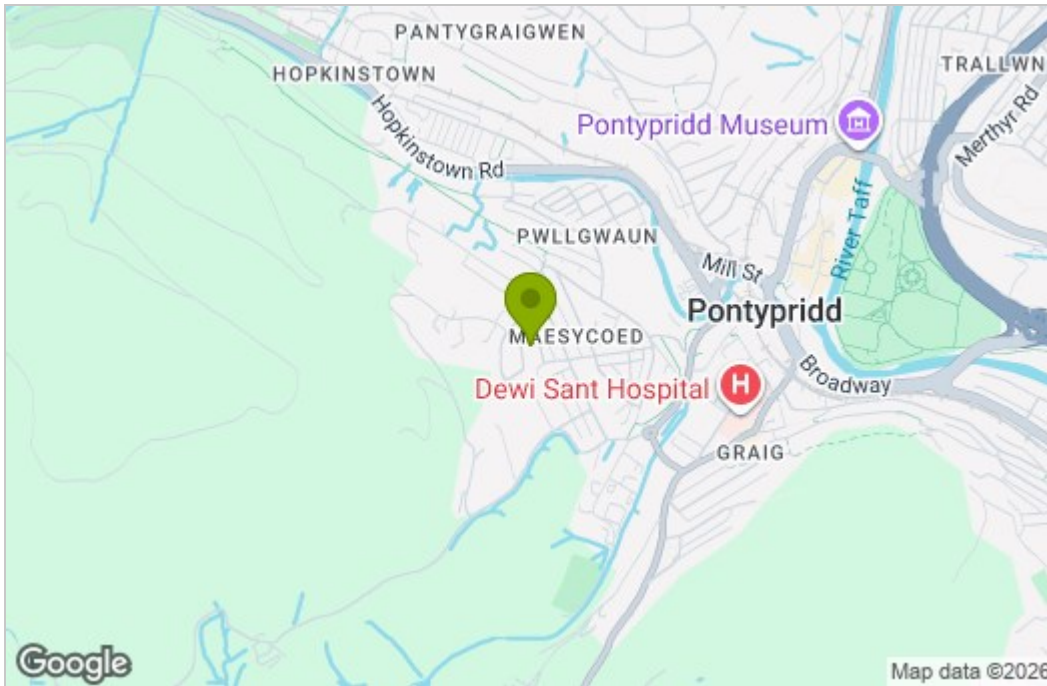
Bathroom



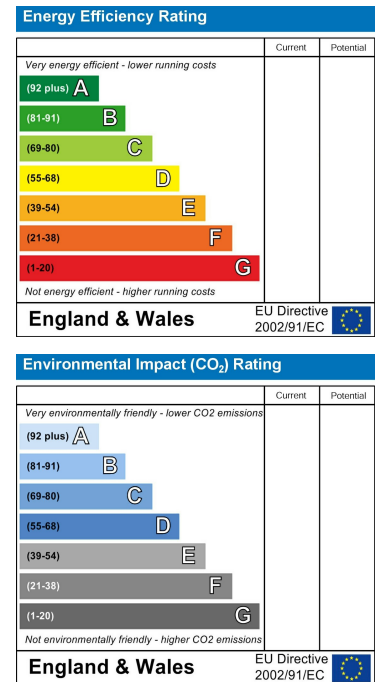
Floor Plan



Area Map



Energy Efficiency Graph



These particulars, whilst believed to be accurate are set out as a general outline only for guidance and do not constitute any part of an offer or contract. Intending purchasers should not rely on them as statements of representation of fact, but must satisfy themselves by inspection or otherwise as to their accuracy. No person in this firm's employment has the authority to make or give any representation or warranty in respect of the property.

22 Market Street, Pontypridd, CF37 2ST

Tel: 01443 404093 Email: pontypridd@hoskinsjohnson.co.uk www.hoskinsjohnson.co.uk